

3D2N

(MIN 2 PAX TO GO)

RANOH ISLAND TOUR WITH ROUND-TRIP FERRY & HOTEL STAY PACKAGE



ADULT

Above 12 Years Old

\$330

PER PERSON

WITH BANANA BOAT & SNORKELLING

\$306

PER PERSON

WITH BANANA BOAT ONLY

\$298

PER PERSON

NO BANANA BOAT & SNORKELLING



ADULT

Above 12 Years Old

\$315

PER PERSON

WITH BANANA BOAT & SNORKELLING

\$295

PER PERSON

WITH BANANA BOAT ONLY

\$285

PER PERSON

NO BANANA BOAT & SNORKELLING



INFANT

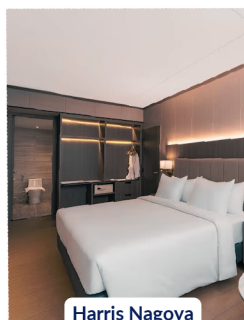
0-3 Years Old

\$145

PER PERSON

PACKAGE INCLUDING:

- ✓ Round-Trip Majestic fast Batam Ferry with 1-way express with ferry taxes and terminal fees
- ✓ Two-night stay at Batam City Hotel
- ✓ Next day international breakfast (2 Days)
- ✓ Inclusive of the hotel 21% Government tax, and service charge
- ✓ Complimentary welcome drink upon check-in
- ✓ Complimentary Local Call in the room
- ✓ Complimentary WIFI Internet in every room & Hotel public area
- ✓ 2ways Hotel pick up and drop off (Batam Centre Terminal - Hotel - Batam Centre Terminal)
- ✓ Ranoh Island one-day tour
 - Including 2ways speedboat transport (Galang Port - Ranoh Island - Galang Port)
 - One Time Banana boat (Optional)
 - One Time Snorkelling (Optional)
 - One Set Lunch in Ranoh Island
 - One Welcome drink
 - Other water sports
 - Return Private transportation Pick from the Hotel To Galang Port



Harris Nagoya



Wyndham Panbil Hotel



Artotel Hotel

***3 HOTELS OPTIONS (SUBJECT TO AVAILABILITY)**

TOUR ITINERARY:

(BT: BATAM Timing; ST: SINGAPORE TIMING)

DAY ONE:

12:40 (ST) Majestic Fast Ferry from Singapore to Batam
 12:40 (BT) Arrival in Batam Cente Ferry Terminal
 12:45 (BT) Transfer Pick up from Batam Center Terminal to Chosen Hotel
 14:00 (BT) Check in to hotel
 15:00 (BT) Free & Easy

DAY TWO:

07:00 (BT) Breakfast in the hotel
 08:00 (BT) Pick up from hotel to Galang Port
 09.30-10.00 (BT) Standby at Galang port jembatan enam
 10.00-10.20 (BT) Galang port to Ranoh Island (speedboat)
 10.20-10.30 (BT) Arrive at Ranoh and welcome drink
 10.30-12.00 (BT) Free and easy / Water sports Activities
 12.00-13.00 (BT) Lunch
 13.00-15.00 (BT) Free and easy / Water sports Activities
 15.00-15.30 (BT) Tea Time
 15.30-16.00 (BT) Preparing back to Galang port
 16.00-16.20 (BT) Ranoh Island to Galang Port (speedboat)
 16.30-18.30 (BT) Driver pickup, Depart from Galang Port (Labun port) back to Hotel
 18:30 (BT) Arrival in Hotel, Free and Easy

DAY THREE:

07.00-09.00 (BT) Breakfast in the hotel
 11.30 (BT) Check out from the hotel
 11.55 (BT) Transfer Pick up from Hotel to Batam Center Terminal
 12:50 (BT) Majestic Fast Ferry from Batam Center to Singapore

NOTE: *The tour itinerary is subject to change to accommodate weather, traffic conditions, and vendor availability. No notice will be given for sudden changes in the schedule

PACKAGE EXCLUDING:

- Travel insurance
- Own expense
- Visa Fee (if need)
- Dinner of the day



+65 69808566



+65 92281150



www.thktour.com



sales@thktour.com